



ANVIL ANGUS



THURSDAY 13TH MARCH 2008 4.30PM

**ANNUAL
BULL
SALE**



LOT 2

ANVIL B022
Bulletproof (AI) (ET)

A standout son of **Time Frame**. The sheer depth of body, fleshing ability and power in this two year old is simply stunning. Offering an outcross pedigree and growth performance. He was the number one IMF scanning bull from the Autumn drop.



LOT 5

ANVIL B215
Bullseye (AI) (ET)

A raw, rugged bull, big boned and heavily fleshed. Well proportioned with plenty of scope. Growth EBVs are all in the top 5% of the breed. Look to this bull to breed not just heavy steers but great cows.



LOT 9

ANVIL B218
Black Rhino (AI) (ET)

This young bull has been the standout of the group since weaning for his extra capacity and stature. Top 1% of the breed for all growth EBVs, CWT and scrotal, as well as being top 5% for milk. This is an ideal bull to produce pen after pen of weaners chocked full of weight with his outstanding early performance. **#1 004 son in Australia for growth.**

LOT 14

ANVIL B180
Balance (AI) (ET)

The standout **Density** calf during our open day, he really shows what Density does best adding that soft natural fleshing ability in a long deep bodied bull. He has a thickness rarely seen this good in an Angus bull. Out of a Merridale Wilcoola Packpower dam he should breed productive functional females with the desired shape.



LOT 22

ANVIL B007
Bond (AI)

Sired by **Hazelwynde Zono Z1**. Z1 was the standout calf for the entire Z drop and from day 1 really looked that extra bit special. Sadly we lost him as a young bull but were fortunate enough to have collected semen. Combining a great carcass background with a solid cow line. Heifers first calf.



LOT 23

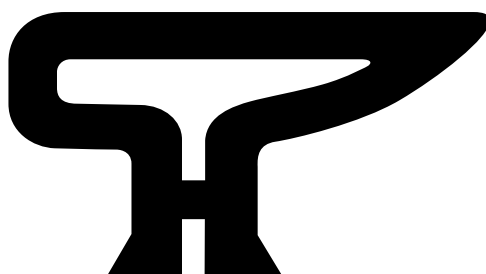
ANVIL B068
Bushranger (AI) (ET)

A great **Gunslinger** son. His 036 dam is a moderate framed cow that raised our herd bull **Hazelwynde Zono Z1** (the sire of HBUB007, HBUB173 and HBUB188). **Gunslinger** is maternal brother to **Time Frame** bringing in the great maternal **Banquet Dream M41**.





The Desired Shape



ANVIL ANGUS

**2ND ON-PROPERTY
ANGUS BULL SALE**

We dedicate this sale to the memory of our young friend
Mathew George 7/4/1986 to 11/11/2007
"Matty"
You will forever be a part of our lives.

Offering

31 HBR ANGUS BULLS

**Thursday, March 13th, 2008
4.30 PM, 292 Connellys Creek Road
Acheron, Victoria**

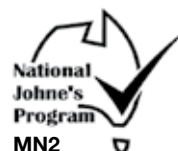
Inspection from 1.00pm

**Stephen Handbury
Phone 03 5772 3389 Mobile 0427 262 823
Email: steve@anvilangus.com.au**



Alexandra	- Andrew Allan	0428 410 341
Mansfield	- Jamie Beckinsale	0428 962 284
	- Adam Mountjoy	0428 962 610
Yea	- Ross Bryant	0427 972 623
Kilmore	- Peter Lowry	0428 178 907
	- Peter Lineham	0428 415 152
Shepparton	- Tony Pianto	0428 532 005
Pakenham	- Peter Brewer	0428 178 908
Kyneton	- Kieran McGrath	0408 507 462

Andrew Embling	- Alexandra	0418 266 038
Chris Pollard	- Yea	0428 993 860
Ray Attwell	- Stud Creek	0428 836 136



Welcome

On behalf of Melissa and myself we welcome you to the 2008 Anvil Angus bull sale. By now you have probably noticed the new name and branding. We are very proud of our new brand as it “speaks” to the type of cattle we seek to breed. The Anvil shape represents for us the type of female we like to see in our paddocks. Wedge shaped front, strong back line and a good square backend. The new name will also be easier for a few of the stock agents to pronounce and spell. A simple clerical error at the Angus Australia office forced us to change from the Diamond H brand late in 2007, a change now looking back we are very pleased we had to make.

This years offering of bulls really shows the quality of breeding coming through our program. The first of our home bred sire’s calves are on offer, as well as calves by bulls I have personally selected to join our program.

All of the sire groups on offer here today are very special to us. They represent years of research and personal inspection. We believe simply selecting a bull from an AI catalogue does not do justice to our or your breeding program. Where possible we have sought to inspect the actual bull himself and if possible the dam. We are proud that our bulls go out to work our cows just as they would in any normal cattle operation. We value our AI and ET programs to advance our genetic pool but not at the loss of real world commercial values. Our Bulls work.

I would like to take this chance to really thank those people who assisted during our sale last year and for the many months after whilst I recovered from back surgery. My heartfelt thanks go to Matty and Jo who where here as soon as they heard I had to go to hospital. Noeleen who made sure the bulls were presented sale day. Chris, who has run both farms for the better part of the last 12 months. Our neighbor John who fed the cattle while we continued to wait for the Autumn break and beyond. My loving family, particularly my wife and children who endured living with me while I recovered.

Sadly 2007 also saw the loss of our young friend Mathew “Matty” George. Matty was always there for everyone. We take solace in the memories we have. We are better for having been fortunate enough to know him. He was a constant beacon of hope throughout the toughest of seasons. He was fiercely proud of his family and loved his cattle with a passion. He will be sorely missed but never forgotten. Goodbye my friend.

Please take the time to join with us after the sale for a great Angus steak.

SALE INFORMATION

REBATE TO OUTSIDE AGENTS:

Outside agents, either accompanying or purchasing on behalf of a breeder at the sale, are entitled to a 5% rebate. To qualify, the agent must register with Anvil in writing or by fax no later than 5pm on the day prior to the sale and must settle within 7 days of the invoice.

STOCK HEALTH:

Anvil is MN2 accredited (VC 651) under the BJD Market Assurance Program. All bulls have been vaccinated with 5 in 1, for Vibriosis and have been drenched with Cydectin. All bulls have been inspected by Nationwide Artificial Breeders and come with a certificate of breeding soundness having been semen and physically examined.

PHONE BIDDING:

Contact either agent at least 24hrs prior to the sale;

Rodwells Andrew Allan 0428 410 341

Landmark Ray Attwell 0428 836 137

INSPECTION:

We encourage buyers to inspect the bulls prior to sale day. This allows us to discuss with you the bulls in greater detail and assist in selection of a sire best suited to your requirements. Please call Stephen on 0427 262 823 to arrange a visit. Lots catalogued will be available for inspection from 1.00pm on sale day, Thursday 13th March.

ANVIL GUARANTEE:

All Bulls have been assessed for structural soundness and evaluated for fertility. To the best of our knowledge the bulls offered are in sound working order as of the time of sale. If during the next 12 months a bull breaks down due to reasons other than illness, injury or disease contracted after leaving Anvil, we will: Firstly look to provide a mutually agreed upon replacement as quickly as practicable, or If a replacement is not possible we will provide you with a credit minus any salvage value at the next Anvil bull sale. In some cases a veterinary report may be requested. It is important to understand that normal care and good husbandry practices must be observed as replacement or a credit is not available if a bull is simply injured or dies for any other reason.

As such we highly recommend you insure your bull/s against injury or death.

ALL BULLS SELL UNENCUMBERED. Unlike some other studs selling top Angus bulls, Anvil Angus sells it's bulls Unencumbered. What does this mean? If you buy the bull you own not only own the bull and salvage but 100% semen, cloning and marketing rights. We retain no call on any bulls sold. We feel if you are prepared to invest in the potential of our genetics you should reap 100% of the rewards of your purchase.

DISCLAIMER:

Whilst all due care and attention has been paid to accuracy in the compilation of this catalogue, neither the vendors, the selling agents or representatives thereof assume any responsibility whatsoever for the correctness, use or interpretation of the information on animals included herein.

Reference Sire BANQUET TIME FRAME Y135 (AI) (ET)

DOB: 03/04/2003
Ident.: VONY135

Quite possibly the best VRD son available in Australia. While traveling in the US in 2004 I had time to inspect AI sire Vermillion Dateline 7078 "VRD" working at Vermillion. I was impressed by the power and weight of the then 8 year old bull out working with cows. Mostly undiscovered in Australia at the time I started to do some research into the bull when I got home. We started to use the bull in our AI and ET programs but I wanted to accelerate this further and set about searching for the best VRD son available in Australia to work as a natural joining sire. We found him very quickly in a herd we know well, Banquet. I got to see him working as a young bull and to see full sisters and knew his dam well. On sale day there was a fair bit of interest and spirited bidding saw the Bull make an Angus sale record of \$50,000.

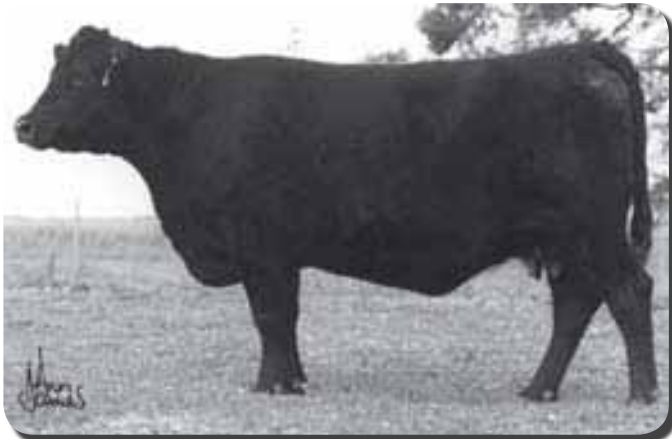
Look to his sons to add frame length and refinement without sacrificing depth of body or maternal power.



BANQUET TIME FRAME Y135 (AI) (ET)

_____ D H D TRAVELER 6807 USA858958
 _____ CONNEALY DATELINE USA12015519
 _____ EILA EILA OF CONANGA USA11640261
VERMILION DATELINE 7078 USA7078
 _____ LEACHMAN RIGHT TIME USA2700
 _____ VERMILION BLACKBIRD 5044 USA5044
 _____ VERMILION BLACKBIRD 3525 USA 3525
 _____ JACS HUDSON USA060984
 _____ ATAHUA LEGACY 26-90 (NZ) (AI) (ET) NZE26-90
 _____ ATAHUA QUEST 544 NZE231143
BANQUET KIWI DREAM (AI) VONM41
 _____ WAITAPU GOVERNOR (AI) (NZ) NZE386
 _____ 1203 OF DELMONT (NZ) (AI) NZE1203
 _____ 30 OF DELMONT NZE216328

Calv. Ease Direct (%)	Calv. Ease Dtrs (%)	Gest. Len. (days)	Birth Wt. (kg)	200 Day Wt. (kg)	400 Day Wt. (Kg)	600 Day Wt. (kg)	Mat. Cow Wt. (kg)	Milk (kg)	Scrotal Size (cm)	Days to Calv.	Carcase Wt. (kg)	Eye Muscle Area (sq.cm)	Rib Fat (mm)	Rump Fat (mm)	Retail Beef Yield (%)	IMF (%)
+0.9	+0.7	-2.5	+5.5	+48	+86	+112	+115	+10	+3.4	-1.0	+65	+3.2	-1.0	-1.4	+1.8	-0.1



BANQUET DREAM M41

Is a true matriarch of the breed, with over 170 register progeny recorded she really is every bit the foundation cow as you would expect. Sound as a bell and still going strong at 15 years of age.



BANQUET DREAM Q34

A sensational daughter of the foundation dream cow M41 is a maternal sister to Time Frame by Pack Power. Son sells as Lot 29.

Bulls from Banquet Time Frame . . .



LOT 1 HBUA245

Notes: This rugged 27 month old son of Time Frame is our first to be offered. He offers fantastic neck extension in a deep long body. Carries his sires exceptional growth.

1 Hazelwynde Archimedes A245

DOB: 20/12/2005

Ident: HBUA245

_____ CONNEALY DATELINE USA12015519
 _____ VERMILION DATELINE 7078 USA7078
 _____ VERMILION BLACKBIRD 5044 USA5044
BANQUET TIME FRAME Y135 (AI) (ET) VONY135
 _____ ATAHUA LEGACY 26-90 (NZ)(AI)ET) NZE26-90
 _____ BANQUET KIWI DREAM (AI) VONM41
 _____ 1203 OF DELMONT (NZ) (AI) NZE1203

 _____ V D A R NEW TREND 315 USA315
 _____ B/R NEW DESIGN 036 USA036
 _____ B/R BLACKCAP EMPRESS 76 USA76
MILLAH MURRAH HELEN U82 (AI) NMMU82
 _____ HINGAIA 469 (AI) NZE469
 _____ MILLAH MURRAH HELEN S92 (AI) NMMS92
 _____ MILLAH MURRAH HELEN Q55 NMMQ55

Calv. Ease Direct (%)	Calv. Ease Dtrs (%)	Gest. Len. (days)	Birth Wt. (kg)	200 Day Wt. (kg)	400 Day Wt. (kg)	600 Day Wt. (kg)	Mat. Cow Wt. (kg)	Milk (kg)	Scrotal Size (cm)	Days to Calv.	Carc. Wt. (kg)	Eye Muscle Area (sq.cm)	Rib Fat (mm)	Rump Fat (mm)	Retail Beef Yield (%)	IMF (%)
+0.4	+1.1	-1.7	+5.6	+42	+74	+96	+93	+9	+1.8	-1.1	+50	+2.2	+0.1	+0.1	+0.5	+0.7

2 Anvil Bulletproof B022 (AI) (ET)

DOB: 13/04/2006

Ident: HBUB022

Calv. Ease Direct (%)	Calv. Ease Dtrs (%)	Gest. Len. (days)	Birth Wt. (kg)	200 Day Wt. (kg)	400 Day Wt. (kg)	600 Day Wt. (kg)	Mat. Cow Wt. (kg)	Milk (kg)	Scrotal Size (cm)	Days to Calv.	Carc. Wt. (kg)	Eye Muscle Area (sq.cm)	Rib Fat (mm)	Rump Fat (mm)	Retail Beef Yield (%)	IMF (%)
-	-	-1.6	+5.1	+43	+78	+101	+107	+8	+2.5	-0.2	+58	+2.6	-0.2	-0.2	+0.8	+0.2



LOT 2 HBUB022

3 Anvil Blade Runner B039 (AI) (ET)

DOB: 17/04/2006

Ident: HBUB039

Calv. Ease Direct (%)	Calv. Ease Dtrs (%)	Gest. Len. (days)	Birth Wt. (kg)	200 Day Wt. (kg)	400 Day Wt. (kg)	600 Day Wt. (kg)	Mat. Cow Wt. (kg)	Milk (kg)	Scrotal Size (cm)	Days to Calv.	Carc. Wt. (kg)	Eye Muscle Area (sq.cm)	Rib Fat (mm)	Rump Fat (mm)	Retail Beef Yield (%)	IMF (%)
-	-	-1.6	+5.2	+42	+80	+97	+98	+8	+2.0	+1.0	+59	+2.7	-1.2	-1.6	+1.5	-0.1

_____ CONNEALY DATELINE USA12015519
 _____ VERMILION DATELINE 7078 USA7078
 _____ VERMILION BLACKBIRD 5044 USA5044
BANQUET TIME FRAME Y135 (AI) (ET) VONY135
 _____ ATAHUA LEGACY 26-90 (NZ)(AI)ET) NZE26-90
 _____ BANQUET KIWI DREAM (AI) VONM41
 _____ 1203 OF DELMONT (NZ) (AI) NZE1203

 _____ PERRYVILLE SPARTAN 54N CAN54N
 _____ GLENNIE SPARTAN 20R CAN20R
 _____ GLENNIE M'BROOK BEULAH 2N CAN2N
BEARTOOTH KAHARAU Q50 (AI) (ET) (TNC) VGIQ50
 _____ KAHARAU ZODEX 86 NZE37729
 _____ KAHARAU E3407 NZEE3407
 _____ KAHARAU C3000 NZE235676



BEARTOOTH KAHARAU Q50

VGIQ50 is a typical New Zealand barrel. This easy doing soft moderately framed cow has worked fantastically with Time Frame to breed these two great bulls

Notes: Peas in a pod, A pair of big boned, easy fleshing, great bodied power bulls. With growth in the top 10% for 200,400 and 600 day weights, these bulls will add the required weight for weaning and beyond. Backed by true maternal cows their replacement heifers will be special.

Reference Sire VERMILION DATELINE VRD 7078

DOB: 04/02/1997
Ident.: USA7078



“VRD” as I saw him in 2004 working cows, he was a sound footed long thick bull. He appeared easy fleshing and well muscled for his age and working clothes.

VERMILION DATELINE 7078

_____ Q A S TRAVELER 23-4 USA23-4
_____ D H D TRAVELER 6807 USA858958
_____ BEMINDFUL MAID D H D 0807 USA680345

CONNELLY DATELINE USA12015519

_____ SCOTCH CAP USA14
_____ EILA EILA OF CONANGA USA11640261
_____ ELLA EILA OF CONANGA USA10745915

_____ N BAR EMULATION EXT USAU23
_____ LEACHMAN RIGHT TIME USA2700
_____ LEACHMAN ERICA 0025 USA11382472

VERMILION BLACKBIRD 5044 USA5044

_____ B A R STACKER 31 USA11426980
_____ VERMILION BLACKBIRD 3525 USA2535
_____ VERMILION BLACKBIRD 9398 USA11293581

Calv. Ease Direct (%)	Calv. Ease Dtrs (%)	Gest. Len. (days)	Birth Wt. (kg)	200 Day Wt. (kg)	400 Day Wt. (Kg)	600 Day Wt. (kg)	Mat. Cow Wt. (kg)	Milk (kg)	Scrotal Size (cm)	Days to Calv.	Carcase Wt. (kg)	Eye Muscle Area (sq.cm)	Rib Fat (mm)	Rump Fat (mm)	Retail Beef Yield (%)	IMF (%)
-3.5	+0.3	-4.3	+7.4	+52	+95	+121	+116	+12	+1.9	+0.3	+65	+3.1	-2.0	-3.1	+3.0	-0.7

Notes: A standout sire offering great length and barrel. He is clean fronted and free moving, VRD is a bull that puts it all together; style, growth and exceptional performance.

Bulls from Vermilion Dateline 7078 . . .

4

Anvil Battleship B191 (AI) (ET)

DOB: 03/09/2006

Ident: HBUB191

Calv. Ease Direct (%)	Calv. Ease Dtrs (%)	Gest. Len. (days)	Birth Wt. (kg)	200 Day Wt. (kg)	400 Day Wt. (kg)	600 Day Wt. (kg)	Mat. Cow Wt. (kg)	Milk (kg)	Scrotal Size (cm)	Days to Calv.	Carc. Wt. (kg)	Eye Muscle Area (sq.cm)	Rib Fat (mm)	Rump Fat (mm)	Retail Beef Yield (%)	IMF (%)
-4.8	-1.4	-1.2	+7.9	+47	+81	+106	+110	+6	+1.3	+1.4	+53	+0.8	-1.7	-2.6	+1.6	-0.3

5

Anvil Bullseye B215 (AI) (ET)

DOB: 05/09/2006

Ident: HBUB215

Calv. Ease Direct (%)	Calv. Ease Dtrs (%)	Gest. Len. (days)	Birth Wt. (kg)	200 Day Wt. (kg)	400 Day Wt. (kg)	600 Day Wt. (kg)	Mat. Cow Wt. (kg)	Milk (kg)	Scrotal Size (cm)	Days to Calv.	Carc. Wt. (kg)	Eye Muscle Area (sq.cm)	Rib Fat (mm)	Rump Fat (mm)	Retail Beef Yield (%)	IMF (%)
-5.4	-1.5	-0.7	+8.1	+45	+83	+106	+111	+6	+2.3	+0.4	+51	+0.5	-1.7	-2.5	+1.3	-0.2

6

Anvil Buckshot B204 (AI) (ET)

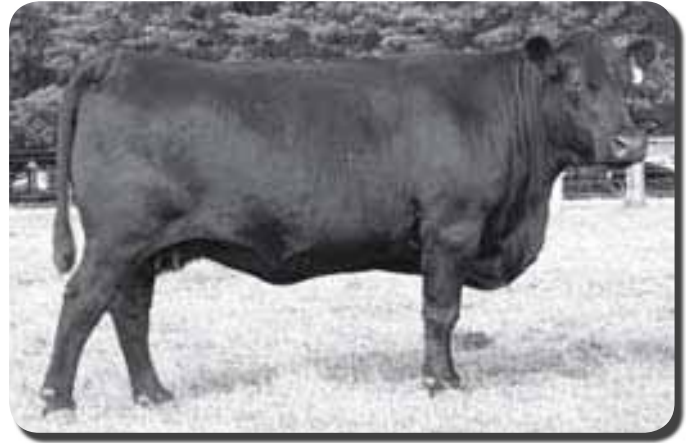
DOB: 04/09/2006

Ident: HBUB204

Calv. Ease Direct (%)	Calv. Ease Dtrs (%)	Gest. Len. (days)	Birth Wt. (kg)	200 Day Wt. (kg)	400 Day Wt. (kg)	600 Day Wt. (kg)	Mat. Cow Wt. (kg)	Milk (kg)	Scrotal Size (cm)	Days to Calv.	Carc. Wt. (kg)	Eye Muscle Area (sq.cm)	Rib Fat (mm)	Rump Fat (mm)	Retail Beef Yield (%)	IMF (%)
-2.9	-1.2	-1.7	+6.9	+46	+82	+105	+108	+6	+1.4	+1.4	+54	+0.8	-1.8	-2.7	+1.4	-0.1

_____ D H D TRAVELER 6807 USA858958
 _____ CONNEALY DATELINE USA12015519
 _____ EILA EILA OF CONANGA USA11640261
VERMILION DATELINE 7078 USA7078
 _____ LEACHMAN RIGHT TIME USA2700
 _____ VERMILION BLACKBIRD 5044 USA5044
 _____ VERMILION BLACKBIRD 3525 USA3525

_____ JACS HUDSON USA060984
 _____ ATAHUA LEGACY 26-90 (NZ) (AI) (ET) NZE26-90
 _____ ATAHUA QUEST 544 NZE231143
BANQUET ECLYPTA Q75 (AI) (ET) VONQ75
 _____ SUMMITCREST POWER PLAY M032 (IMP USA)
 _____ KYLOH WILDFLOWER G15 (AI) (ET) VWKG15
 _____ BACK TRACK ECLYPTA 190 (ET) NGP190



BANQUET ECLYPTA Q75

is the dam of Lots 4 to 6, pictured here at 13 years of age.



LOT 6

Notes: A line of raw, rugged bulls, big boned and heavily fleshed. Well proportioned with plenty of scope. Their growth EBVs range from the top 1% to 5% of the breed. Look to these bulls to breed not just heavy steers but great cows.

7

Anvil Bombshell B220 (AI) (ET)

DOB: 06/09/2006

Ident: HBUB220

Calv. Ease Direct (%)	Calv. Ease Dtrs (%)	Gest. Len. (days)	Birth Wt. (kg)	200 Day Wt. (kg)	400 Day Wt. (kg)	600 Day Wt. (kg)	Mat. Cow Wt. (kg)	Milk (kg)	Scrotal Size (cm)	Days to Calv.	Carc. Wt. (kg)	Eye Muscle Area (sq.cm)	Rib Fat (mm)	Rump Fat (mm)	Retail Beef Yield (%)	IMF (%)
-3.1	-0.2	-1.6	+7.5	+48	+80	+104	+103	+12	+0.3	+2.7	+53	+1.2	-1.6	-2.3	+1.5	-0.2

8

Anvil Battleaxe B225 (AI) (ET)

DOB: 07/09/2006

Ident: HBUB225

Calv. Ease Direct (%)	Calv. Ease Dtrs (%)	Gest. Len. (days)	Birth Wt. (kg)	200 Day Wt. (kg)	400 Day Wt. (kg)	600 Day Wt. (kg)	Mat. Cow Wt. (kg)	Milk (kg)	Scrotal Size (cm)	Days to Calv.	Carc. Wt. (kg)	Eye Muscle Area (sq.cm)	Rib Fat (mm)	Rump Fat (mm)	Retail Beef Yield (%)	IMF (%)
-4.7	-0.4	-1.4	+8.7	+53	+88	+114	+113	+12	+0.5	+2.6	+60	+1.8	-1.5	-2.2	+1.8	-0.3

_____ D H D TRAVELER 6807 USA858958
 _____ CONNEALY DATELINE USA12015519
 _____ EILA EILA OF CONANGA USA11640261
VERMILION DATELINE 7078 USA7078
 _____ LEACHMAN RIGHT TIME USA2700
 _____ VERMILION BLACKBIRD 5044 USA5044
 _____ VERMILION BLACKBIRD 3525 USA3525

_____ JACS HUDSON USA060984
 _____ ATAHUA LEGACY 26-90 (NZ) (AI) (ET) NZE26-90
 _____ ATAHUA QUEST 544 NZE231143
MERRIGRANGE JESTRESS P116 (AI) (ET) VMGP116
 _____ GALLAGHERS YANKEE (RC) USA393E
 _____ KAHARAU YANKEE JESTRESS AB (IMP NZE) NZE3444
 _____ KAHARAU B2655 NZEB2655



LOT 8

MERRIGRANGE JESTRESS P116

Pictured here at 14, easy doing great structured donor. Look also for her Density calf later in the sale.



Notes: A pair of similarly bred and type bulls to lots 4-6, this time out of a daughter of the foundation Yankee Jestress cow. Stephen Branson rates her as the best daughter he has seen. Again, like lots 4-6 these bulls offer growth EBVs in the range at the top 1% to 5% of the breed.

Reference Sire S A V 8180 TRAVELER 004

DOB: 01/01/2000
Ident.: USA13512009



004 as seen in 2004 while visiting Schaff Angus Valley in North Dakota.

S A V 8180 TRAVELER 004

_____ TRAVELER 1148 G D A R USA1148
 _____ G D A R TRAVELER 71 USA71
 _____ G D A R MISS BLACKCAP 567 USA717922

SITZ TRAVELER 8180 USA8180

_____ G D A R RAINMAKER 340 USA340
 _____ SITZ EVERELDA ENTENSE 1137 USA1137
 _____ SITZ EVERELDA ENTENSE 2335 USA2335

_____ V D A R SHOSHONE 548 USA9389
 _____ A A R NEW TREND USA9958
 _____ DONNA A A R 74 USA8324

BOYD FOREVER LADY 8003 USA8003

_____ LEACHMAN RIGHT TIME USA2700
 _____ S V F FOREVER LADY 57D USA57D
 _____ S V F FOREVER LADY 1128 USA11699928

Calv. Ease Direct (%)	Calv. Ease Dtrs (%)	Gest. Len. (days)	Birth Wt. (kg)	200 Day Wt. (kg)	400 Day Wt. (Kg)	600 Day Wt. (kg)	Mat. Cow Wt. (kg)	Milk (kg)	Scrotal Size (cm)	Days to Calv.	Carcase Wt. (kg)	Eye Muscle Area (sq.cm)	Rib Fat (mm)	Rump Fat (mm)	Retail Beef Yield (%)	IMF (%)
-1.1	-	-2.8	+5.0	+48	+85	+104	+81	+18	+2.0	-2.3	+61	+1.4	-0.2	-0.6	+1.0	+0.4

Notes: SAV 8180 Traveler 004 is the breed's most popular performance sire, leading the Angus breed in the US for registrations by a wide margin. He consistently stamps his progeny with length, thickness, muscle and breed-leading performance. His progeny are stylish and attractive with an easy fleshing appearance, a powerful structure and an early maturing growth curve.



004 Son: SAV 004 PREDOMINANT



004 Son: SAV 004 DENSITY 4336

Bulls from S A V 8180 Traveler 004 . . .

9

Anvil Black Rhino B218 (AI) (ET)

DOB: 05/09/2006

Ident: HBUB218

Calv. Ease Direct (%)	Calv. Ease Dtrs (%)	Gest. Len. (days)	Birth Wt. (kg)	200 Day Wt. (kg)	400 Day Wt. (kg)	600 Day Wt. (kg)	Mat. Cow Wt. (kg)	Milk (kg)	Scrotal Size (cm)	Days to Calv.	Carc. Wt. (kg)	Eye Muscle Area (sq.cm)	Rib Fat (mm)	Rump Fat (mm)	Retail Beef Yield (%)	IMF (%)
-	-	-1.8	+7.2	+53	+91	+115	-	+18	+2.8	-	+68	+2.3	-0.2	-0.7	+1.3	+0.5



SAV EMBLYNETTE 1182



SAV 004 PREDOMINANT 4438

Maternal sister of Dam of Lots 9 to 11. Blood brother to Lots 9 to 11.

10

Anvil Black Magic B154 (AI) (ET)

DOB: 27/08/2006

Ident: HBUB154

Calv. Ease Direct (%)	Calv. Ease Dtrs (%)	Gest. Len. (days)	Birth Wt. (kg)	200 Day Wt. (kg)	400 Day Wt. (kg)	600 Day Wt. (kg)	Mat. Cow Wt. (kg)	Milk (kg)	Scrotal Size (cm)	Days to Calv.	Carc. Wt. (kg)	Eye Muscle Area (sq.cm)	Rib Fat (mm)	Rump Fat (mm)	Retail Beef Yield (%)	IMF (%)
-	-	-1.7	+6.9	+50	+87	+111	-	+18	+3.0	-	+62	+2.1	+0.1	-0.3	+1.1	+0.3

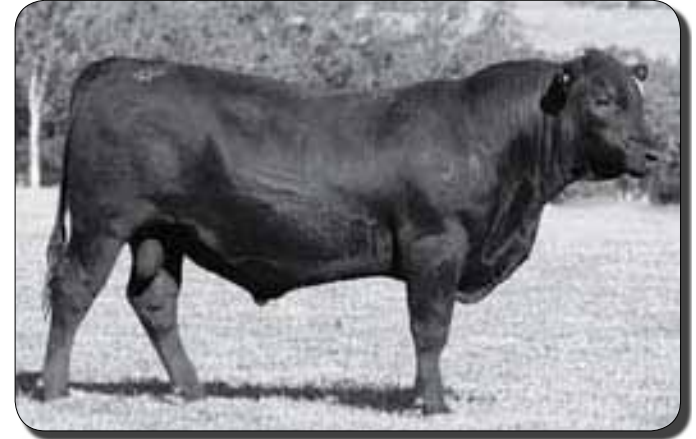
11

Anvil Black Jack B157 (AI) (ET)

DOB: 28/08/2006

Ident: HBUB157

Calv. Ease Direct (%)	Calv. Ease Dtrs (%)	Gest. Len. (days)	Birth Wt. (kg)	200 Day Wt. (kg)	400 Day Wt. (kg)	600 Day Wt. (kg)	Mat. Cow Wt. (kg)	Milk (kg)	Scrotal Size (cm)	Days to Calv.	Carc. Wt. (kg)	Eye Muscle Area (sq.cm)	Rib Fat (mm)	Rump Fat (mm)	Retail Beef Yield (%)	IMF (%)
-	-	-2.1	+6.2	+49	+90	+112	-	+18	+3.0	-	+65	+2.1	-0.6	-1.2	+1.5	+0.3



LOT 9

- _____ G D A R TRAVELER 71 USA71
- _____ SITZ TRAVELER 8180 USA8180
- _____ SITZ EVERELDA ENTENSE 1137 USA1137
- S A V 8180 TRAVELER 004 USA13512009**
- _____ A A R NEW TREND USA9958
- _____ BOYD FOREVER LADY 8003 USA8003
- _____ S V F FOREVER LADY 57D USA57D
- _____ BON VIEW BANDO 598 USA598
- _____ S A F 598 BANDO 5175 USA5175
- _____ S A F ROYAL LASS 1002 USA1002
- S A V EMBLYNETTE 334 (ET) USA14454851**
- _____ S A V EXT EMULATION 5040 USA12366652
- _____ S A V EMBLYNETTE 7319 USA12819889
- _____ SAV EMBLYNETTE DIAMOND 5369

Notes: The 004s have really stood out as a group since weaning for their extra capacity and stature . First three are top 1% of the breed for all growth EBVs and scrotal, as well as being top 5% for milk. The ideal bulls to produce pen after pen of weaners chocked full of weight with outstanding early performance. HBUB218 is the number one 004 son in Australia for growth.



LOT 12

EA EMBLYNETTE 103

Dam of Lot 12.



12

Anvil Blacksmith B166 (AI) (ET)

DOB: 30/08/2006

Ident: HBUB166

Calv. Ease Direct (%)	Calv. Ease Dtrs (%)	Gest. Len. (days)	Birth Wt. (kg)	200 Day Wt. (kg)	400 Day Wt. (kg)	600 Day Wt. (kg)	Mat. Cow Wt. (kg)	Milk (kg)	Scrotal Size (cm)	Days to Calv.	Carc. Wt. (kg)	Eye Muscle Area (sq.cm)	Rib Fat (mm)	Rump Fat (mm)	Retail Beef Yield (%)	IMF (%)
-	-	-2.3	+5.6	+48	+78	+101	-	+17	+1.1	-	+55	+1.4	-0.5	-1.0	+1.0	+0.3

- _____ G D A R TRAVELER 71 USA71
- _____ SITZ TRAVELER 8180 USA8180
- _____ SITZ EVERELDA ENTENSE 1137 USA1137
- S A V 8180 TRAVELER 004 USA13512009**
- _____ A A R NEW TREND USA9958
- _____ BOYD FOREVER LADY 8003 USA8003
- _____ S V F FOREVER LADY 57D USA57D
- _____ BON VIEW BANDO 598 USA598
- _____ S A F 598 BANDO 5175 USA5175
- _____ S A F ROYAL LASS 1002 USA1002
- EA EMBLYNETTE 013 (ET) USA13938193**
- _____ ELLANIN SKY DIVER USA10420675
- _____ S A V SKY DIAMOND 2582 USA11974749
- _____ S A V BLACK DIAMOND 562 USA9919955

Reference Sire S A V 004 DENSITY 4336

DOB: 25/03/2004
Ident.: USA14725035



Steve with Density at SAV in North Dakota July 2006.

SAV MAY 7238 - Density's Dam.

This beautiful-uddered Right Time daughter is one of the most influential cows in the SAV history.



HBUB176 Anvil Brigadier

seen here 2 weeks out after joining the heifers in spring.

S A V 004 DENSITY 4336

_____ G D A R TRAVELER 71 USA71
 _____ SITZ TRAVELER 8180 USA8180
 _____ SITZ EVERELDA ENTENSE 1137 USA1137

S A V 8180 TRAVELER 004 USA13512009

_____ A A R NEW TREND USA9958
 _____ BOYD FOREVER LADY 8003 USA8003
 _____ S V F FOREVER LADY 57D USA57D

_____ N BAR EMULATION EXT USAU23
 _____ LEACHMAN RIGHT TIME USA2700
 _____ LEACHMAN ERICA 0025 USA11382472

SAV MAY 7238 USA12819816

_____ R & J PROSPECTOR 341 USA341
 _____ S A R PROSPECTOR MAY 9124 USA12010126
 _____ S A R CLASSIC MAY 7278 USA11311946

Calv. Ease Direct (%)	Calv. Ease Dtrs (%)	Gest. Len. (days)	Birth Wt. (kg)	200 Day Wt. (kg)	400 Day Wt. (Kg)	600 Day Wt. (kg)	Mat. Cow Wt. (kg)	Milk (kg)	Scrotal Size (cm)	Days to Calv.	Carcase Wt. (kg)	Eye Muscle Area (sq.cm)	Rib Fat (mm)	Rump Fat (mm)	Retail Beef Yield (%)	IMF (%)
-1.5	-	-1.5	+6.3	+48	+86	+105	+84	+16	+1.3	-1.5	+63	+2.7	-0.6	-1.1	+1.6	+0.4

Notes: SAV 004 Density 4336 was the popular US\$55,000 third top-selling bull in the 2005 SAV sale where he was admired for his impressive phenotype and flawless structure. He has seen extensive worldwide use and reports validate his consistent ability to improve structure in his offspring while adding thickness, muscle and style. His greatest strength is in his feminine, broody, well-designed daughters who are very maternal and productive in their appearance. Density is the leading sire for registrations in Canada, following the tradition of his sire who leads the breed for registrations in America. The dam of SAV 004 Density 4336 is a beautiful-uddered, top-producing Right Time donor out of the same Pathfinder dam from whom SAV Net Worth 4200 descends. She continues her productive role at 11 years of age.

13

Anvil Brigadier B176 (AI)

DOB: 31/08/2006

Ident: HBUB176

Calv. Ease Direct (%)	Calv. Ease Dtrs (%)	Gest. Len. (days)	Birth Wt. (kg)	200 Day Wt. (kg)	400 Day Wt. (kg)	600 Day Wt. (kg)	Mat. Cow Wt. (kg)	Milk (kg)	Scrotal Size (cm)	Days to Calv.	Carc. Wt. (kg)	Eye Muscle Area (sq.cm)	Rib Fat (mm)	Rump Fat (mm)	Retail Beef Yield (%)	IMF (%)
-0.7	-	-1.9	+6.3	+43	+76	+96	-	+15	+1.3	-	+52	+2.6	-0.1	-0.4	+0.8	+0.4

_____ SITZ TRAVELER 8180 USA8180
 _____ S A V 8180 TRAVELER 004 USA13512009
 _____ BOYD FOREVER LADY 8003 USA8003
S A V 004 DENSITY 4336 USA14725035
 _____ LEACHMAN RIGHT TIME USA2700
 _____ S A V MAY 7238 USA12819816
 _____ S A R PROSPECTOR MAY 9124

_____ VERMILION DATELINE 7078 USA7078
 _____ VERMILION YELLOWSTONE USAJ244
 _____ VERMILION B JESTRESS 3912 USA3912
VERMONT JANE Y22 (AI) (ET) CCVY22
 _____ ONEILLS RENOVATOR USA2943
 _____ KOA JANE Q13 (AI) (ET) NZCQ13
 _____ MERRIGRANGE JANE E78 (AI) VMGE78

Notes: Don't let this guys weight fool you, used to join our spring heifers for 8 weeks he was the third heaviest spring bull calf prior to joining. He does everything so well oozing eye appeal. Semen retained for within herd use.



LOT 14

14

Anvil Balance B180 (AI) (ET)

DOB: 01/09/2006

Ident: HBUB180

Calv. Ease Direct (%)	Calv. Ease Dtrs (%)	Gest. Len. (days)	Birth Wt. (kg)	200 Day Wt. (kg)	400 Day Wt. (kg)	600 Day Wt. (kg)	Mat. Cow Wt. (kg)	Milk (kg)	Scrotal Size (cm)	Days to Calv.	Carc. Wt. (kg)	Eye Muscle Area (sq.cm)	Rib Fat (mm)	Rump Fat (mm)	Retail Beef Yield (%)	IMF (%)
-1.0	-	-1.0	+5.3	+37	+68	+83	-	+12	+0.9	-0.8	+46	+2.5	-0.6	-1.1	+1.4	+0.1

(See Lot 13 for full details)

S A V 004 DENSITY 4336 USA14725035

_____ SCOTCH CAP USA14
 _____ PACK POWER SCOTCH CAP 889 (ET) USA889
 _____ SIR WMS ELBA 374 USA374
MERRIDALE WILCOOLA Q129 (AI) (ET) CMDQ129
 _____ H F PROFESSOR USAH340
 _____ MERRIGRANGE WILCOOLA E95 (AI) (ET) VMGE95
 _____ MERRIGRANGE WILCOOLA C44 VMGC44+83

Notes: The standout Density calf during our open day, he really shows what Density does best adding that soft natural fleshing ability in a long deep bodied bull. He has a thickness rarely seen this good in an Angus bull.

16

Anvil Baron B194 (AI) (ET)

DOB: 03/09/2006

Ident: HBUB194

Calv. Ease Direct (%)	Calv. Ease Dtrs (%)	Gest. Len. (days)	Birth Wt. (kg)	200 Day Wt. (kg)	400 Day Wt. (kg)	600 Day Wt. (kg)	Mat. Cow Wt. (kg)	Milk (kg)	Scrotal Size (cm)	Days to Calv.	Carc. Wt. (kg)	Eye Muscle Area (sq.cm)	Rib Fat (mm)	Rump Fat (mm)	Retail Beef Yield (%)	IMF (%)
+1.8	-	-2.0	+3.0	+34	+71	+83	-	+13	+0.9	-	+52	+1.8	-0.8	-1.4	+1.1	+0.3

(See Lot 13 for full details)

S A V 004 DENSITY 4336 USA14725035

_____ HOFF GREAT WESTERN S C 456 USA456
 _____ TE MANIA TUFFNUT NZE438094
 _____ TE MANIA ROWANDALE 191 AB NZE 191 AB
MERRIDALE JANE T110 (AI) (ET) CMDT110
 _____ BON VIEW BANDO 598 USA598
 _____ MERRIGRANGE JANE Q184 (AI) (ET) VMGQ184
 _____ MERRIGRANGE JANE G100 (AI) (ET) VMGG100

Notes: Another great outcross Pedigree. Density has really clicked with this bulls dam to produce a moderately framed easy doing bull.

15

Anvil Battalion B172 (AI) (ET)

DOB: 31/08/2006

Ident: HBUB172

Calv. Ease Direct (%)	Calv. Ease Dtrs (%)	Gest. Len. (days)	Birth Wt. (kg)	200 Day Wt. (kg)	400 Day Wt. (kg)	600 Day Wt. (kg)	Mat. Cow Wt. (kg)	Milk (kg)	Scrotal Size (cm)	Days to Calv.	Carc. Wt. (kg)	Eye Muscle Area (sq.cm)	Rib Fat (mm)	Rump Fat (mm)	Retail Beef Yield (%)	IMF (%)
-	-	-0.1	+6.7	+44	+71	+93	-	+14	+0.4	+1.2	+48	+1.2	-0.5	-0.8	+0.6	+0.5

(See Lot 13 for full details)

S A V 004 DENSITY 4336 USA14725035

_____ JACS HUDSON USA060984
 _____ ATAHUA LEGACY 26-90 (NZ) (AI) (ET) NZE26-90
 _____ ATAHUA QUEST 544 NZE231143
MERRIGRANGE JESTRESS P116 (AI) (ET) VMGP116
 _____ GALLAGHERS YANKEE (RC) USA393E
 _____ KAHARAU YANKEE JESTRESS AB (IMP NZE) NZE3444
 _____ KAHARAU B2655 NZEB2655

Notes: Maternal brother to lots 7 and 8. These Density calves really standout for their easy fleshing nature.

17

Anvil Bizmark B198 (AI) (ET)

DOB: 03/09/2006

Ident: HBUB198

Calv. Ease Direct (%)	Calv. Ease Dtrs (%)	Gest. Len. (days)	Birth Wt. (kg)	200 Day Wt. (kg)	400 Day Wt. (kg)	600 Day Wt. (kg)	Mat. Cow Wt. (kg)	Milk (kg)	Scrotal Size (cm)	Days to Calv.	Carc. Wt. (kg)	Eye Muscle Area (sq.cm)	Rib Fat (mm)	Rump Fat (mm)	Retail Beef Yield (%)	IMF (%)
+2.7	+2.3	-2.7	+4.8	+45	+86	+105	+90	+12	+2.4	-2.0	+67	+3.2	-1.1	-1.5	+2.3	0.0

(See Lot 13 for full details)

S A V 004 DENSITY 4336 USA14725035

_____ ONEILLS RENOVATOR USA2943
 _____ TE MANIA KELP K207 (AI) VTMK207
 _____ TE MANIA JAPARA F119 VTMF119
TE MANIA LOWAN R182 (AI) (ET) (TNC) VTMR182
 _____ RAMBO 465T OF J R S USA465T
 _____ TE MANIA LOWAN P6 (AI) (ET) VTMP6
 _____ TE MANIA LOWAN M118 (AI) (ET) (TNC)

Notes: A maternal brother to the Te Mania AI sire Wizard (VTMW8). Check out the butt on this bull, Density has stamped him with a thickness you don't often see in Angus.

Reference Sire B C C BUSHWACKER 41-93



DOB: 24/09/1993

Ident.: USA41-93

Notes: Great bull for adding growth, milk and CWT.

- BANDOLIER ESTON G V 21X CAN21X
- BANDOLIER ESTON DURNESS 42B USA428
- GLENDODDIE BURGESS BARDELLA CAN16455
- PARAMONT AMBUSH 2172 USA2172**
- SCHEARBROOK SHOSHONE USA7011
- E W S MISS BURGESS 1720 USA1720
- CHOICY OF HILLENDALE 44 USA8187
- BAND 234 OF IDEAL 3163 USA8505294
- TEHAMA BANDO 155 USA9891499
- TEHAMA BLACKCAP G373 USAG373
- R C ANITA T BANDO 918903 USA918903**
- Q A S TRAVELER 23-4 USA23-4
- R C TRAVELING ANN 8903 USA8903
- FIVE STAR ANNIE OAKLEY 317 USA317

Calv. Ease Direct (%)	Calv. Ease Dtrs (%)	Gest. Len. (days)	Birth Wt. (kg)	200 Day Wt. (kg)	400 Day Wt. (kg)	600 Day Wt. (kg)	Mat. Cow Wt. (kg)	Milk (kg)	Scrotal Size (cm)	Days to Calv.	Carc. Wt. (kg)	Eye Muscle Area (sq.cm)	Rib Fat (mm)	Rump Fat (mm)	Retail Beef Yield (%)	IMF (%)
-3.1	-0.2	-2.8	+5.4	+52	+83	+100	+84	+20	+1.3	-4.2	+68	+4.6	-1.8	-3.0	+4.0	-0.3

Reference Sire B/R NEW DESIGN 036



DOB: 02/02/1990

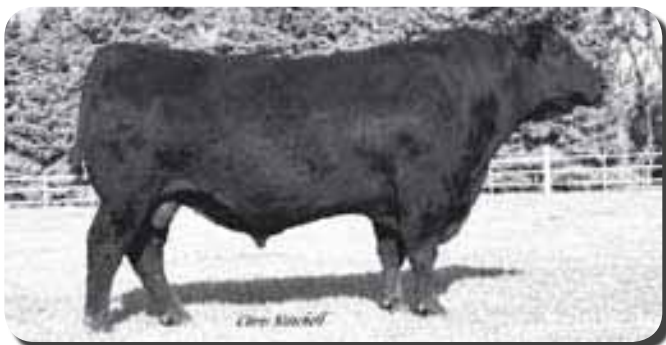
Ident.: USA036

Notes: The carcass legend himself. Two Direct sons sell.

- V D A R SHOSHONE 548 USA9389
- A A R NEW TREND USA9958
- DONNA A A R 74 USA8324
- V D A R NEW TREND 315 USA315**
- P S POWER PLAY USA8974207
- V D A R LUCY 704 USA1028
- V D A R SHOSHONE LUCY 605 USA9897
- QLC WINCHESTER CAN591438
- K&K TOP GUN USA 10624281
- ANKONY B999 LASS 57115 USA8498362
- B/R BLACKCAP EMPRESS 76 USA76**
- RCT MACHINIST USA9842974
- QLC A70 BLKCP EMPRESS E43T USAE43T
- MT ROSE BLACKCAP EMPRESS 602

Calv. Ease Direct (%)	Calv. Ease Dtrs (%)	Gest. Len. (days)	Birth Wt. (kg)	200 Day Wt. (kg)	400 Day Wt. (kg)	600 Day Wt. (kg)	Mat. Cow Wt. (kg)	Milk (kg)	Scrotal Size (cm)	Days to Calv.	Carc. Wt. (kg)	Eye Muscle Area (sq.cm)	Rib Fat (mm)	Rump Fat (mm)	Retail Beef Yield (%)	IMF (%)
+0.9	+1.7	-2.4	+3.9	+34	+66	+88	+81	+15	+1.6	-2.2	+46	+3.9	-0.4	-1.2	+1.6	+1.7

Reference Sire S A F 598 BANDO 5175



- BAND 234 OF IDEAL 3163 USA8505294
- TEHAMA BANDO 155 USA9891499
- TEHAMA BLACKCAP G373 USAG373
- BON VIEW BANDO 598 USA598**
- VOLTAGE HK K142 USA141945
- BON VIEW DORA 56 USA792795
- BON VIEW DORA 254 USA500288
- A A R NEW TREND USA9958
- V D A R NEW TREND 315 USA315
- V D A R LUCY 704 USA1028
- S A F ROYAL LASS 1002 USA1002**
- BROST POWER DRIVE USA251
- S A F ROYAL LASS 6089 USA6089
- LEACHMAN LASS 1004 USA1004

Calv. Ease Direct (%)	Calv. Ease Dtrs (%)	Gest. Len. (days)	Birth Wt. (kg)	200 Day Wt. (kg)	400 Day Wt. (kg)	600 Day Wt. (kg)	Mat. Cow Wt. (kg)	Milk (kg)	Scrotal Size (cm)	Days to Calv.	Carc. Wt. (kg)	Eye Muscle Area (sq.cm)	Rib Fat (mm)	Rump Fat (mm)	Retail Beef Yield (%)	IMF (%)
-3.3	-1.3	-2.7	+6.5	+56	+90	+124	+98	+20	+2.8	-1.7	+66	+1.6	-0.1	-0.8	+0.9	+1.0

DOB: 11/03/1995

Ident.: USA5175

Notes: Superior growth and fantastic maternal characteristics. Son topped our 2007 Sale selling to Ancona station.

**SAF
ROYAL
LASS
1002**

5175's Dam
SAF Royal.



18 Anvil Blacksmith B155 (AI) (ET)

DOB: 27/08/2006 Ident: HBUB155

Calv. Ease Direct (%)	Calv. Ease Dtrs (%)	Gest. Len. (days)	Birth Wt. (kg)	200 Day Wt. (kg)	400 Day Wt. (kg)	600 Day Wt. (kg)	Mat. Cow Wt. (kg)	Milk (kg)	Scrotal Size (cm)	Days to Calv.	Carc. Wt. (kg)	Eye Muscle Area (sq.cm)	Rib Fat (mm)	Rump Fat (mm)	Retail Beef Yield (%)	IMF (%)
-2.8	-1.4	-1.3	+6.9	+48	+84	+101	+92	+15	+2.3	-3.3	+62	+4.3	-0.1	-0.6	+1.9	+0.6

- _____ BANDOLIER ESTON DURNESS 42B USA428
- _____ PARAMONT AMBUSH 2172 USA2172
- _____ E W S MISS BURGESS 1720 USA1720
- B C C BUSHWACKER 41-93 USA41-93**
- _____ TEHAMA BANDO 155 USA9891499
- _____ R C ANITA T BANDO 918903 USA918903
- _____ R C TRAVELING ANN 8903 USA8903
- _____ SCOTCH CAP USA14
- _____ PACK POWER SCOTCH CAP 889 (ET) USA889
- _____ SIR WMS ELBA 374 USA374
- MERRIGRANGE VICKY N10 (AI) (ET) VMGN10**
- _____ ONEILLS RENOVATOR USA2943
- _____ MERRIGRANGE VICKY H43 (AI) (ET) VMGH43
- _____ MERRIGRANGE VICKY D114 (AI) (ET)

Notes: Bringing the best maternal traits of his sire and donor dam this standout bull was used over heifers for 8 weeks coming out at the end of January.



RC ANITA T BANDO

Dam of Bushwacker 41-93.

19 Anvil Boleslaw B217 (AI) (ET)

DOB: 05/09/2006 Ident: HBUB217

Calv. Ease Direct (%)	Calv. Ease Dtrs (%)	Gest. Len. (days)	Birth Wt. (kg)	200 Day Wt. (kg)	400 Day Wt. (kg)	600 Day Wt. (kg)	Mat. Cow Wt. (kg)	Milk (kg)	Scrotal Size (cm)	Days to Calv.	Carc. Wt. (kg)	Eye Muscle Area (sq.cm)	Rib Fat (mm)	Rump Fat (mm)	Retail Beef Yield (%)	IMF (%)
-0.2	+1.1	-1.4	+5.9	+37	+65	+90	+86	+11	+1.9	-1.8	+47	+3.4	-0.9	-1.6	+2.0	+0.5

20 Anvil Beefy B228 (AI) (ET)

DOB: 10/09/2006 Ident: HBUB228

Calv. Ease Direct (%)	Calv. Ease Dtrs (%)	Gest. Len. (days)	Birth Wt. (kg)	200 Day Wt. (kg)	400 Day Wt. (kg)	600 Day Wt. (kg)	Mat. Cow Wt. (kg)	Milk (kg)	Scrotal Size (cm)	Days to Calv.	Carc. Wt. (kg)	Eye Muscle Area (sq.cm)	Rib Fat (mm)	Rump Fat (mm)	Retail Beef Yield (%)	IMF (%)
-1.5	+0.9	-0.8	+6.6	+36	+66	+92	+87	+11	+2.3	-2.1	+45	+3.2	-0.9	-1.8	+2.0	+0.3

- _____ A A R NEW TREND USA9958
- _____ V D A R NEW TREND 315 USA315
- _____ V D A R LUCY 704 USA1028
- B/R NEW DESIGN 036 USA036**
- _____ K&K TOP GUN USA10624281
- _____ B/R BLACKCAP EMPRESS 76 USA76
- _____ QLC A70 BLKCP EMPRESS E43T
- _____ TC STOCKMAN USA706674
- _____ TC STOCKMAN 365 USA365
- _____ TC PRIDE 0014 USA0014
- WILLSBRO DANDLOO 365 T1 (AI) (ET) NWIT1**
- _____ Q A S TRAVELER 23-4 USA23-4
- _____ TE MANIA DANDLOO L148 (AI) (ET) VTML148
- _____ TE MANIA DANDLOO H89 VTMH89

Notes: A pair of later maturing DIRECT sons of the breed carcass legend B/R New Design 036. This pair of bulls are only really starting to hit their straps watch them really bloom as they mature.



Steve with 1002 at Sydgen in 2004

21 Anvil Banker B032 (AI) (ET)

DOB: 16/04/2006 Ident: HBUB032

Calv. Ease Direct (%)	Calv. Ease Dtrs (%)	Gest. Len. (days)	Birth Wt. (kg)	200 Day Wt. (kg)	400 Day Wt. (kg)	600 Day Wt. (kg)	Mat. Cow Wt. (kg)	Milk (kg)	Scrotal Size (cm)	Days to Calv.	Carc. Wt. (kg)	Eye Muscle Area (sq.cm)	Rib Fat (mm)	Rump Fat (mm)	Retail Beef Yield (%)	IMF (%)
-	-	-2.7	+6.1	+44	+68	+94	+68	+15	+2.2	-0.7	+45	+1.9	-0.3	-0.8	+1.3	-0.1

- _____ TEHAMA BANDO 155 USA9891499
- _____ BON VIEW BANDO 598 USA598
- _____ BON VIEW DORA 56 USA792795
- S A F 598 BANDO 5175 USA5175**
- _____ V D A R NEW TREND 315 USA315
- _____ S A F ROYAL LASS 1002 USA1002
- _____ S A F ROYAL LASS 6089 USA6089
- _____ A A R NEW TREND USA9958
- _____ V D A R NEW TREND 315 USA315
- _____ V D A R LUCY 704 USA1028
- YTHANBRAE N32 (AI) VLYN32**
- _____ YTHANBRAE F55 VLYF55
- _____ YTHANBRAE J66 (TW) VLYJ66
- _____ YTHANBRAE ZODIAC B21 (AI) LVYB21+82

Notes: The only 5175 son catalogued this year he is a little more moderate than most 5175's however he still packs the performance you expect from this pedigree. His dam is an extremely functional old New Trend 315 donor who has sold sons to \$26,000 (Don Costello, NT) in the past.



LOT 21

VLYN32
Dam of HBUB032



Reference Sire HAZELWYNDE ZONO Z1 (AI)

HAZELWYNDE ZONO Z1 (AI)

DOB: 21/02/2004
Ident.: HBUZ1



NAQW109 ARDROSSAN DIRECTION

Sire of Zono Z1.

_____ G A R PRECISION 1680 USA1680
 _____ C A FUTURE DIRECTION 5321 USA5321
 _____ C A MISS POWER FIX 308 USA12054694
ARDROSSAN DIRECTION W109 (AI) (ET) NAQW109
 _____ G T MAXIMUM USA88
 _____ ARDROSSAN WILCOOLA Q71 (AI) (ET) NAQQ71
 _____ ARDROSSAN WILCOOLA K31 (AI) (ET) NAQK31
 _____ V D A R NEW TREND 315 USA315
 _____ B/R NEW DESIGN 036 USA036
 _____ B/R BLACKCAP EMPRESS 76 USA76
MILLAH MURRAH FLOWER X24 (AI) (ET) NMMX24
 _____ MILLAH MURRAH HENRY H4 (AI) NMMH4
 _____ MILLAH MURRAH FLOWER K24 NMMK24
 _____ MILLAH MURRAH FLOWER G20 (AI) NMMG20

Calv. Ease Direct (%)	Calv. Ease Dtrs (%)	Gest. Len. (days)	Birth Wt. (kg)	200 Day Wt. (kg)	400 Day Wt. (Kg)	600 Day Wt. (kg)	Mat. Cow Wt. (kg)	Milk (kg)	Scrotal Size (cm)	Days to Calv.	Carcass Wt. (kg)	Eye Muscle Area (sq.cm)	Rib Fat (mm)	Rump Fat (mm)	Retail Beef Yield (%)	IMF (%)
+0.7	+0.6	-3.8	+4.5	+34	+69	+91	+77	+16	+1.7	-1.6	+50	+5.0	+0.5	+0.2	+1.2	+1.1

NOTES: Z1 was the standout calf for the entire Z drop and from day 1 he stood out in front of all the other bulls. Andrew Gubbins picked him as being the extra bit special while visiting that year. Sadly we lost him as a young bull but where lucky enough to have collected semen. His dam is a moderate donor we purchased at the Millah Murrah dispersal.

Reference Sire BANQUET GUNSLINGER Y218 (AI) (ET)

BANQUET GUNSLINGER Y218 (AI) (ET)

DOB: 22/05/2003
Ident.: VONY218



BANQUET Y218

_____ BANDOLIER ESTON DURNESS 42B USA428
 _____ PARAMONT AMBUSH 2172 USA2172
 _____ E W S MISS BURGESS 1720 USA1720
B C C BUSHWACKER 41-93 USA41-93
 _____ TEHAMA BANDO 155 USA9891499
 _____ R C ANITA T BANDO 918903 USA918903
 _____ R C TRAVELING ANN 8903 USA8903
 _____ JACS HUDSON USA060984
 _____ ATAHUA LEGACY 26-90 (NZ) (AI) (ET) NZE26-90
 _____ ATAHUA QUEST 544 NZE231143
BANQUET KIWI DREAM (AI) VONM41
 _____ WAITAPU GOVERNOR (AI) (NZ) NZE386
 _____ 1203 OF DELMONT (NZ) (AI) NZE1203
 _____ 30 OF DELMONT NZE216328

Calv. Ease Direct (%)	Calv. Ease Dtrs (%)	Gest. Len. (days)	Birth Wt. (kg)	200 Day Wt. (kg)	400 Day Wt. (Kg)	600 Day Wt. (kg)	Mat. Cow Wt. (kg)	Milk (kg)	Scrotal Size (cm)	Days to Calv.	Carcass Wt. (kg)	Eye Muscle Area (sq.cm)	Rib Fat (mm)	Rump Fat (mm)	Retail Beef Yield (%)	IMF (%)
-0.9	-	-1.2	+5.8	+48	+85	+99	+98	+13	+2.0	-2.0	+62	+1.8	-1.4	-2.1	+1.6	+0.2

NOTES: A standout Bushwacker son of the foundation Dream cow and maternal brother to Time Frame. Look to his sons to carry his ability to add width and hindquarter. Exceptional growth, maternal and carcass.



LOT 23



LOT 25

Bulls from Hazelwynde Zono Z1, Banquet Gunslinger Y218

22

Anvil Bond B007 (AI)

DOB: 16/02/2006

Ident: HBUB007

Calv. Ease Direct (%)	Calv. Ease Dtrs (%)	Gest. Len. (days)	Birth Wt. (kg)	200 Day Wt. (kg)	400 Day Wt. (kg)	600 Day Wt. (kg)	Mat. Cow Wt. (kg)	Milk (kg)	Scrotal Size (cm)	Days to Calv.	Carc. Wt. (kg)	Eye Muscle Area (sq.cm)	Rib Fat (mm)	Rump Fat (mm)	Retail Beef Yield (%)	IMF (%)
+0.4	-	-2.2	+4.0	+36	+69	+93	+89	-	+0.6	-	+54	+2.8	-0.1	-0.4	+0.9	+0.7

_____ C A FUTURE DIRECTION 5321 USA5321
 _____ ARDROSSAN DIRECTION W109 (AI) (ET) NAQW109
 _____ ARDROSSAN WILCOOLA Q71 (AI) (ET) NAQQ71

HAZELWYNDE ZONO Z1 (AI) HBUZ1

_____ B/R NEW DESIGN 036 USA036
 _____ MILLAH MURRAH FLOWER X24 (AI) (ET) NMMX24
 _____ MILLAH MURRAH FLOWER K24 NMMK24

_____ S A F FAME USA3107
 _____ S A F FOCUS OF ER USA6163
 _____ G D A R FOREVER LADY 246 USA11781043

HAZELWYNDE ELLA Z32 (AI) HBUZ32

_____ GLEN ISLAY TORONTO 22B (IMP CAN) (AI)
 _____ KYLOH ELLA S8 (AI) VWKS8
 _____ KYLOH ELLA J7 (AI) (ET) VWKJ7

Notes: Impressive well balanced individual in every sense of the word, both type wise and EBVs. There is just very little wrong with him.

23

Anvil Bushranger B068

DOB: 20/07/2006

Ident: HBUB068

Calv. Ease Direct (%)	Calv. Ease Dtrs (%)	Gest. Len. (days)	Birth Wt. (kg)	200 Day Wt. (kg)	400 Day Wt. (kg)	600 Day Wt. (kg)	Mat. Cow Wt. (kg)	Milk (kg)	Scrotal Size (cm)	Days to Calv.	Carc. Wt. (kg)	Eye Muscle Area (sq.cm)	Rib Fat (mm)	Rump Fat (mm)	Retail Beef Yield (%)	IMF (%)
-	-	-	+5.1	+41	+78	+94	+-	+15	+1.3	-1.5	+58	+3.1	-0.8	-1.4	+1.9	+0.3

_____ PARAMONT AMBUSH 2172 USA2172
 _____ B C C BUSHWACKER 41-93 USA41-93
 _____ R C ANITA T BANDO 918903 USA918903

BANQUET GUNSLINGER Y218 (AI) (ET) VONY218

_____ ATAHUA LEGACY 26-90 (NZ) (AI) (ET)
 _____ BANQUET KIWI DREAM (AI) VONM41
 _____ 1203 OF DELMONT (NZ) (AI) NZE1203

_____ V D A R NEW TREND 315 USA315
 _____ B/R NEW DESIGN 036 USA036
 _____ B/R BLACKCAP EMPRESS 76 USA76

MILLAH MURRAH FLOWER X24 (AI) (ET) NMMX24

_____ MILLAH MURRAH HENRY H4 (AI) NMMH4
 _____ MILLAH MURRAH FLOWER K24 NMMK24
 _____ MILLAH MURRAH FLOWER G20 (AI) NMMG20

Notes: Maternal Brother to Hazelwynde Zono Z1 Sire of lot 22. With carcass yield such a large component of economic profitability, bulls like this hit the market spot on. Top 5% for CWT.

24

Anvil Baldric B078

DOB: 01/08/2006

Ident: HBUB078

Calv. Ease Direct (%)	Calv. Ease Dtrs (%)	Gest. Len. (days)	Birth Wt. (kg)	200 Day Wt. (kg)	400 Day Wt. (kg)	600 Day Wt. (kg)	Mat. Cow Wt. (kg)	Milk (kg)	Scrotal Size (cm)	Days to Calv.	Carc. Wt. (kg)	Eye Muscle Area (sq.cm)	Rib Fat (mm)	Rump Fat (mm)	Retail Beef Yield (%)	IMF (%)
-	-	-	+6.2	+44	+80	+95	-	+12	+1.5	-1.4	+53	+1.3	-0.9	-1.5	+0.7	+0.3

(See Lot 23 for full details)

BANQUET GUNSLINGER Y218 (AI) (ET) VONY218

_____ TC STOCKMAN USA 706674
 _____ TC STOCKMAN 365 USA365
 _____ TC PRIDE 0014 USA0014

ARDROSSAN KYLIE U120 (AI) (ET) NAQU120

_____ NICHOLS LANDMARK L56 USA56
 _____ ARDROSSAN KYLIE K20 (AI) (ET) NAQK20
 _____ METRO ZINNIA Y43 VSJY43+79

Notes: Maternal brother to led bull that sold at the 2006 Angus National to Stuart Mc Leod from Nagambie. Fantastic growth bull with all the maternal bases covered.

25

Anvil Bonanza B080

DOB: 11/08/2006

Ident: HBUB080

Calv. Ease Direct (%)	Calv. Ease Dtrs (%)	Gest. Len. (days)	Birth Wt. (kg)	200 Day Wt. (kg)	400 Day Wt. (kg)	600 Day Wt. (kg)	Mat. Cow Wt. (kg)	Milk (kg)	Scrotal Size (cm)	Days to Calv.	Carc. Wt. (kg)	Eye Muscle Area (sq.cm)	Rib Fat (mm)	Rump Fat (mm)	Retail Beef Yield (%)	IMF (%)
-	-	-3.4	+2.7	+35	+66	+79	-	+9	+1.2	-2.3	+50	+2.4	-0.8	-1.3	+1.2	+0.2

(See Lot 23 for full details)

BANQUET GUNSLINGER Y218 (AI) (ET) VONY218

_____ SCOTCH CAP USA14
 _____ G T MAXIMUM USA88
 _____ GT MISS TRAVELER 58 (RC) USA58

KERRIGAN SALLY S1 (AI) (ET) (TNC) CAVS1

_____ V P I LORD PATRIOT 9025 (RC) USA9025
 _____ GLEN BOLD SALLY E40 SGB540
 _____ GLEN BOLD SALLY X70 SGBX70+78

Notes: A natural calf straight from the donor pen. This safe bull still packs a carcass weight that rates in the top 15%.

26

Anvil Blackwood B223

DOB: 07/09/2006

Ident: HBUB223

Calv. Ease Direct (%)	Calv. Ease Dtrs (%)	Gest. Len. (days)	Birth Wt. (kg)	200 Day Wt. (kg)	400 Day Wt. (kg)	600 Day Wt. (kg)	Mat. Cow Wt. (kg)	Milk (kg)	Scrotal Size (cm)	Days to Calv.	Carc. Wt. (kg)	Eye Muscle Area (sq.cm)	Rib Fat (mm)	Rump Fat (mm)	Retail Beef Yield (%)	IMF (%)
-	-	-0.9	+4.5	+34	+61	+74	-	+11	+1.0	-0.9	+41	+1.9	-0.9	-1.5	+1.2	+0.1

(See Lot 23 for full details)

BANQUET GUNSLINGER Y218 (AI) (ET) VONY218

_____ SCOTCH CAP USA14
 _____ PACK POWER SCOTCH CAP 889 (ET) USA889
 _____ SIR WMS ELBA 374 USA374

MERRIDALE WILCOOLA Q129 (AI) (ET) CMDQ129

_____ H F PROFESSOR USAH340
 _____ MERRIRANGE WILCOOLA E95 (AI) (ET) VMGE95
 _____ MERRIRANGE WILCOOLA C44 VMGC44+83

Notes: Maternal brother to lot 14, straight from the donor pen. Combining fantastic maternal qualities from both sides of the pedigree. Packpower and Dream is a proven combination.

27

Anvil Brushcutter B243

DOB: 19/09/2006

Ident: HBUB243

Calv. Ease Direct (%)	Calv. Ease Dtrs (%)	Gest. Len. (days)	Birth Wt. (kg)	200 Day Wt. (kg)	400 Day Wt. (kg)	600 Day Wt. (kg)	Mat. Cow Wt. (kg)	Milk (kg)	Scrotal Size (cm)	Days to Calv.	Carc. Wt. (kg)	Eye Muscle Area (sq.cm)	Rib Fat (mm)	Rump Fat (mm)	Retail Beef Yield (%)	IMF (%)
-	-	-1.0	+6.4	+43	+76	+96	-	+10	+2.5	-3.0	+48	+0.2	-0.9	-1.4	+0.5	+0.2

(See Lot 23 for full details)

BANQUET GUNSLINGER Y218 (AI) (ET) VONY218

_____ VERMILION DATELINE 7078 USA7078
 _____ VERMILION YELLOWSTONE USAJ244
 _____ VERMILION B JESTRESS 3912 USA3912

VERMONT JEDDA Y93 (AI) (ET) CCVY93

_____ TE MANIA PALER P181 (AI) (ET) (TNC) VTMP181
 _____ TE MANIA JEDDA R137 (AI) (TNC) VTMR137
 _____ TE MANIA JEDDA M94 (AI) VTMM94

Notes: Don't let this bull slip under the radar, with growth in the top 10% for 200, 400 and 600 day weights, he should ensure your pens of weaners will be up the front.

Reference Sire **SUMMITCREST SCOTCH CAP OB45**

SUMMITCREST SCOTCH CAP OB45

DOB: 09/02/1992
Ident.: USA0B45



**SUMMITCREST SCOTCH
CAP OB45**

_____ EARLY SUNSET EMULOUS 60E CAN60E
 _____ P S POWER PLAY USA8974207
 _____ P S MENTEITH BLANCHE 205 USA8511577
SCOTCH CAP USA14
 _____ BAND 105 OF S C 579 USA9019342
 _____ HOFF BAND OF S C 509 USA9538351
 _____ EMULOUS E OF S C 4 USA8645304
 _____ KEN CARYL MR ANGUS 8017 USA8017
 _____ PREMIER INDEPENDENCE K N USA1871
 _____ FREESTATE BARBARA 871 OF KAF
SUMMITCREST HEIRESS OT09 USAOT09
 _____ PINE DRIVE BIG SKY USA9894245
 _____ SUMMITCREST HEIRESS ORO1 USAOR01
 _____ SUMMITCREST HEIRESS OM71 USAOM71

Calv. Ease Direct (%)	Calv. Ease Dtrs (%)	Gest. Len. (days)	Birth Wt. (kg)	200 Day Wt. (kg)	400 Day Wt. (Kg)	600 Day Wt. (kg)	Mat. Cow Wt. (kg)	Milk (kg)	Scrotal Size (cm)	Days to Calv.	Carcase Wt. (kg)	Eye Muscle Area (sq.cm)	Rib Fat (mm)	Rump Fat (mm)	Retail Beef Yield (%)	IMF (%)
+2.0	+1.4	-3.0	+4.3	+32	+59	+69	+43	+10	+2.5	-4.0	+33	+2.3	+1.2	+1.8	-1.3	+2.8

Reference Sire **MC CUMBER EQUATOR 6122**

MC CUMBER EQUATOR 6122

DOB: 08/03/1996
Ident.: USA6122



**MC CUMBER EQUATOR
6122**

_____ COTTONTAIL MATERNAL POWER 464
 _____ PAPA POWER 096 USA096
 _____ BLACKBIRD D H D 2816 USA2816
PAPA EQUATOR 2928 USA2928
 _____ PAPA RITO TRAVELER 4807 USA4807
 _____ PAPA ENVIOUS BLACKBIRD 8849 USA8849
 _____ ENVIOUS BLACKBIRD D H D 5848
 _____ SCHEARBROOK SHOSHONE USA7011
 _____ SHOSHONE 247 P J M USA98899
 _____ JUANADA 104 OF P J M USA684488
MISS WIX 365 OF MC CUMBER USA448345
 _____ MARSHALL PRIDE 18 A O USA7182492
 _____ MISS WIX 294 OF MC CUMBER USA289322
 _____ MISS WIX 682 OF MC CUMBER USA7547732

Calv. Ease Direct (%)	Calv. Ease Dtrs (%)	Gest. Len. (days)	Birth Wt. (kg)	200 Day Wt. (kg)	400 Day Wt. (Kg)	600 Day Wt. (kg)	Mat. Cow Wt. (kg)	Milk (kg)	Scrotal Size (cm)	Days to Calv.	Carcase Wt. (kg)	Eye Muscle Area (sq.cm)	Rib Fat (mm)	Rump Fat (mm)	Retail Beef Yield (%)	IMF (%)
-4.0	+0.1	-1.0	+6.2	+42	+81	+101	+75	+17	+2.3	-2.4	+61	+4.1	-0.5	-0.8	+1.8	+0.3



Inspecting client bred steers purchased at Yea sale, grown out and sent to the Ladysmith feedlot. These steers are being long fed for Japan.

Bulls from Scotch Cap, Mc Cumber Equator, Hazelwynde Zono

28 Anvil Bunyip B169 (AI) (ET)

DOB: 31/08/2006 Ident: HBUB169

Calv. Ease Direct (%)	Calv. Ease Dtrs (%)	Gest. Len. (days)	Birth Wt. (kg)	200 Day Wt. (kg)	400 Day Wt. (kg)	600 Day Wt. (kg)	Mat. Cow Wt. (kg)	Milk (kg)	Scrotal Size (cm)	Days to Calv.	Carc. Wt. (kg)	Eye Muscle Area (sq.cm)	Rib Fat (mm)	Rump Fat (mm)	Retail Beef Yield (%)	IMF (%)
-2.1	+1.3	-1.8	+3.1	+26	+53	+64	+47	+13	+0.9	-4.1	+35	+2.9	+0.9	+1.3	-0.2	+1.6

_____ P S POWER PLAY USA8974207
 _____ SCOTCH CAP USA14
 _____ HOFF BAND 07 OF S C 509 USA9538351
SUMMITCREST SCOTCH CAP OB45 USAOB45
 _____ PREMIER INDEPENDENCE K N USA1871
 _____ SUMMITCREST HEIRESS OT09 USAOT09
 _____ SUMMITCREST HEIRESS OR01 USAOR01

 _____ SCOTCH CAP USA14
 _____ RITO 9M9 OF 2036 SCOTCH CAP (AI) (ET) USA9M9
 _____ LEACHMAN BLACKBIRD 2036 USA2036
YTHANBRAE N45 (AI) VLYN45
 _____ YTHANBRAE G31 (AI) VLYG31
 _____ YTHANBRAE K150 VLYK150
 _____ YTHANBRAE A14 VLYA14+81

29 Anvil Bruno B190 (AI) (ET)

DOB: 03/09/2006 Ident: HBUB190

Calv. Ease Direct (%)	Calv. Ease Dtrs (%)	Gest. Len. (days)	Birth Wt. (kg)	200 Day Wt. (kg)	400 Day Wt. (kg)	600 Day Wt. (kg)	Mat. Cow Wt. (kg)	Milk (kg)	Scrotal Size (cm)	Days to Calv.	Carc. Wt. (kg)	Eye Muscle Area (sq.cm)	Rib Fat (mm)	Rump Fat (mm)	Retail Beef Yield (%)	IMF (%)
-1.1	-0.1	-1.4	+3.9	+37	+69	+83	+70	+13	+2.0	-2.2	+48	+1.7	-0.2	-0.5	+0.2	+1.0

_____ PAPA POWER 096 USA096
 _____ PAPA EQUATOR 2928 USA2928
 _____ PAPA ENVIOUS BLACKBIRD 8849 USA8849
MC CUMBER EQUATOR 6122 USA6122
 _____ SHOSHONE 247 P J M USA98899
 _____ MISS WIX 365 OF MC CUMBER USA448345
 _____ MISS WIX 294 OF MC CUMBER USA289322

 _____ SCOTCH CAP USA14
 _____ PACK POWER SCOTCH CAP 889 (ET) USA889
 _____ SIR WMS ELBA 374 USA374
BANQUET DREAM Q34 (AI) (ET) VONQ34
 _____ ATAHUA LEGACY 26-90 (NZ) (AI) (ET) NZE26-90
 _____ BANQUET KIWI DREAM (AI) VONM41
 _____ 1203 OF DELMONT (NZ) (AI) NZE1203

Notes: Full brother to Lot 14 from our 2007 Sale, sold to Ancona Station. Out of top Banquet donor cow Q34, maternal sister to Banquet Time Frame Y135. Include the Miss Wix 365 cow and you have a deep maternal pedigree.

30 Anvil Bachelor B173 (AI) (ET)

DOB: 31/08/2006 Ident: HBUB173

Calv. Ease Direct (%)	Calv. Ease Dtrs (%)	Gest. Len. (days)	Birth Wt. (kg)	200 Day Wt. (kg)	400 Day Wt. (kg)	600 Day Wt. (kg)	Mat. Cow Wt. (kg)	Milk (kg)	Scrotal Size (cm)	Days to Calv.	Carc. Wt. (kg)	Eye Muscle Area (sq.cm)	Rib Fat (mm)	Rump Fat (mm)	Retail Beef Yield (%)	IMF (%)
-	-	-	+3.6	+32	+63	+83	-	+17	+1.7	-	+48	+3.8	+0.1	0.0	+0.8	+1.3



LOT 30

31 Anvil BBQ B188 (AI) (ET)

DOB: 02/09/2006 Ident: HBUB188

Calv. Ease Direct (%)	Calv. Ease Dtrs (%)	Gest. Len. (days)	Birth Wt. (kg)	200 Day Wt. (kg)	400 Day Wt. (kg)	600 Day Wt. (kg)	Mat. Cow Wt. (kg)	Milk (kg)	Scrotal Size (cm)	Days to Calv.	Carc. Wt. (kg)	Eye Muscle Area (sq.cm)	Rib Fat (mm)	Rump Fat (mm)	Retail Beef Yield (%)	IMF (%)
+3.2	+1.5	-1.8	+4.3	+31	+57	+80	+76	+17	+2.7	-3.0	+41	+3.5	+0.7	+0.7	+0.2	+1.5

_____ C A FUTURE DIRECTION 5321 USA5321
 _____ ARDROSSAN DIRECTION W109 (AI) (ET) NAQW109
 _____ ARDROSSAN WILCOOLA Q71 (AI) (ET) NAQQ71
HAZELWYNDE ZONO Z1 (AI) HBZ1
 _____ B/R NEW DESIGN 036 USA036
 _____ MILLAH MURRAH FLOWER X24 (AI) (ET) NMMX24
 _____ MILLAH MURRAH FLOWER K24 NMMK24

 _____ SCOTCH CAP USA14
 _____ TE MANIA NORMAN N48 (AI) (ET) VTMN48
 _____ TE MANIA BEEAC J118 (AI) (ET) VTMJ118
TE MANIA BARUNAH R312 (AI) (ET) (TC) VTMR312
 _____ BURTHLENE PATRIOT 47M (RC) CAN47M
 _____ TE MANIA BARUNAH L88 (AI) (ET) VTML088
 _____ TE MANIA BARUNAH J21 (AI) (ET) (RC)



VTMR312 TE MANIA BARUNAH R312

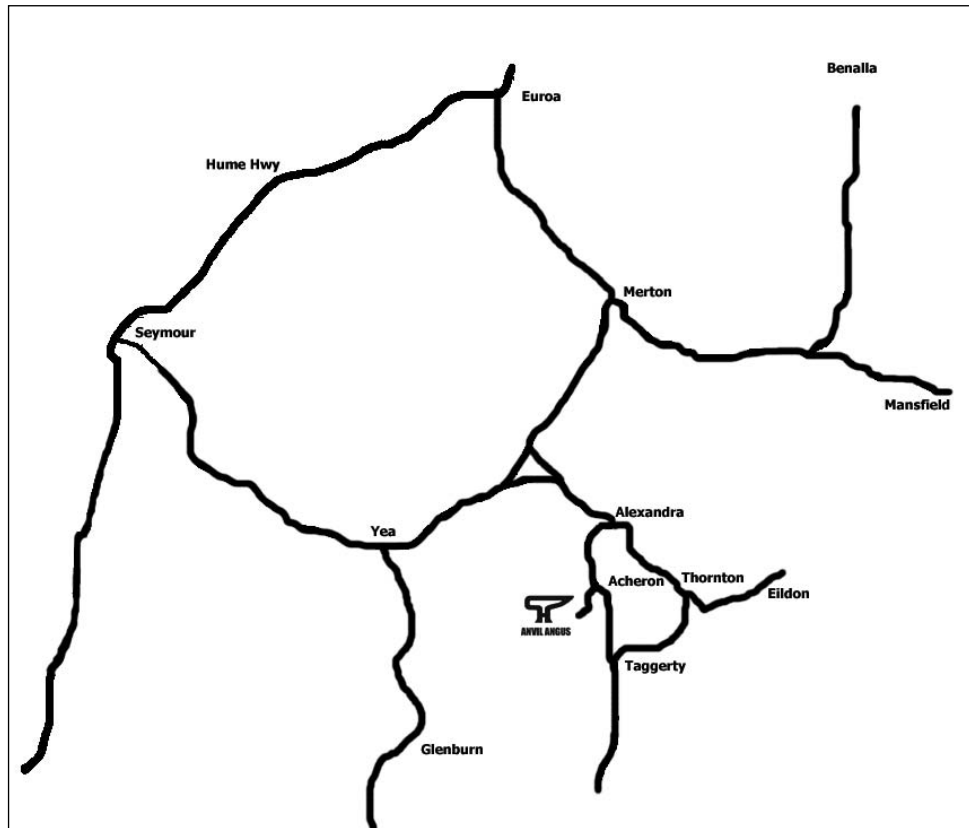
Dam of Lots 31 and 32. Dam of Te Mania Xpo, Xamined, Yakka, You Yang and Grand Dam to Te Mania ADA. We rate this cow so highly we sought out and added her Donor Dam, old VTML88 to our herd in 2007.



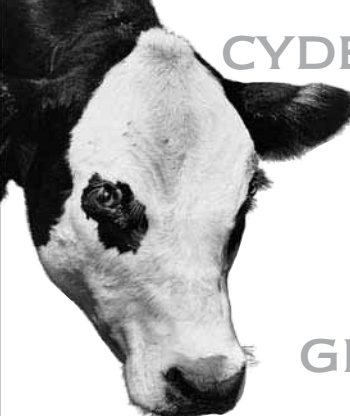
LOT 31

*We would like to thank all buyers, bidders and visitors
for your support.
Please join us for refreshments and a great Angus Steak
after the sale.*

LOCATION MAP




Ensure you have a catalogue. Bring this one.



CYDECTIN* CARES FOR ALL CREATURES,


GREAT



AND SMALL.
(Dung Beetle)

Cydectin* cattle drenches don't kill dung beetles, leaving them free to remove worm larvae and fly breeding sites from your pastures and improve pasture sustainability. Cydectin also:

- Kills worms for longer. 42 days on *Ostertagia* and lungworm
- Is Rainfast, so it won't pour off when it rains
- Nil Export Slaughter Interval (ESI)
- Nil meat and milk withholding period
- No impact on Dung beetles¹



FORT DODGE AUSTRALIA PTY LIMITED. 1 MAITLAND PLACE, PARKVIEW BUSINESS CENTRE, BAULKHAM HILLS. TEL 02 9899 0444. FAX 02 9899 2151.

* Registered Trade Mark. ¹While every specie has not been tested, 4 major species have. See label.

CYDECTIN POUR-ON
POUR-ON FOR CATTLE AND RED DEER.

NOTES

